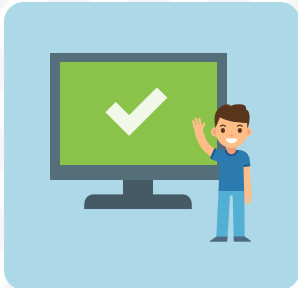


# Heritage Middle School 2020-2021 School Year Frequently Asked Questions



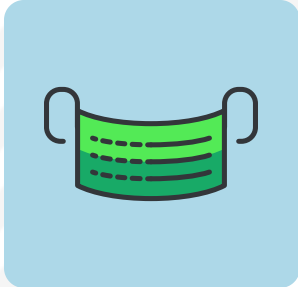
## Q: If I choose full distance learning for the semester, what will instruction look like for my student?

Distance learning will be structured like a normal, in-person school day with designated instructional time for breaks. Teachers will be available for live instruction, support and guidance during the school day. [Click here for our HMS distance learning schedule.](#)



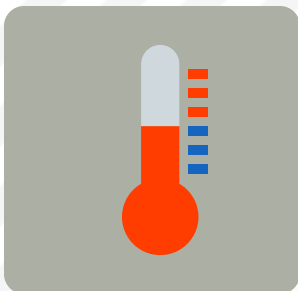
## Q: If I choose full distance learning for the semester, will students be required to sign in every day?

Yes. Keeping in line with CCPS's attendance policy, students participating in full time distance learning will be required to sign in every day during each period/block. Teachers will provide live instruction and be virtually available during for the duration of the digital class to offer additional support and guidance while students complete assigned work.



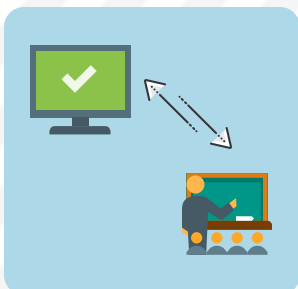
## Q: Will masks be required for students at school?

At this time, masks are not required. However, we **STRONGLY** encourage the use of masks by students and staff as much as possible to reduce the spread of the virus in our school and community.



## Q: If my child becomes sick, should I enroll him/her in distance learning at that time?

No. Students attending school in person who become sick or are quarantined will be able to receive and complete any missed assignments without penalty. Once a student has met the GA Dept of Public Health's guidelines for returning to work/school, the students would be able to return to school.



## Q: Why do students have to commit to an entire semester of distance learning if that option is chosen?

In order to provide quality instruction for all students, CCPS will be staffing distance learning teachers from existing teachers in the district. For the district to maintain balanced class sizes and schedules, students will only have to option to transfer from distance learning back to the traditional classroom setting at the end of each semester. Students who enroll in distance learning for the fall will have the option to return to school for in-person instruction in January or continue distance learning for the remainder of the school year.



### **Q: Can my child enroll in full-time distance learning and still participate in extracurricular activities?**

Yes. Students enrolled in full-time distance learning will still be able to participate in all extracurricular activities at their zoned school if they are willing to come in person for practice/game times (includes all athletic programs). Students who wish to participate in extracurricular "courses" such as band and chorus would need to come to school for that class each day.



### **Q: Will all connections/electives still be offered in at HMS?**

Class offerings for in-person instruction will not be limited. All connections and electives will be offered in the school building with enhanced cleaning measures and social distancing when possible.



### **Q: Will students be allowed to eat in the dining hall?**

Yes. Students will eat in the dining hall. Other areas of the building/campus may be utilized for breakfast and lunch as well to reduce the number of students in one area at a time. Dismissal times will be staggered by class to limit the number of students being served at the same time, and social distancing markers will be placed in the dining hall line to encourage students to maintain an appropriate distance.



### **Q: Will my student still be able to participate in the Horizon program?**

At this time, we cannot guarantee Horizon classes through digital learning. Some APEX courses may have an honors option and others classes may not. If a Horizon class cannot be accommodated through full distance learning, the student's gifted status will not change because of the choice to participate in distance learning this year and would be enrolled in Horizon classes upon returning the campus.



### **Q: Will students be required to stay in the same class all day?**

No. While in some cases it may be limited or times may be staggered, students will be able to transition between classes throughout the day.



### **Q: Will field trips, dances, and school wide assemblies be allowed?**

Not at this time. Students will not be scheduled for any field trips during or after school hours for at least the first semester. There will also be no dances or school wide gatherings such as assemblies or pep rallies for the fall semester.